



A UNIQUE PRODUCT...EXCELLENT PRODUCT VALUE...

**GREAT SERVICES**

**I AM HAPPY**

**EXCELLENT**

**SUPER FINE**

**HIGH QUALITY**

**PERFECTLY**

**SUPERB**

**FIVE STARS**

**cello<sup>®</sup>**



**Cello bubble guard**, a revolutionary board engineered to offer endless solutions. Made up from Polypropylene ( PP ) it is known for its high strength and minimum weight. It is ideal for demanding applications like packaging, paneling, printing and much more.



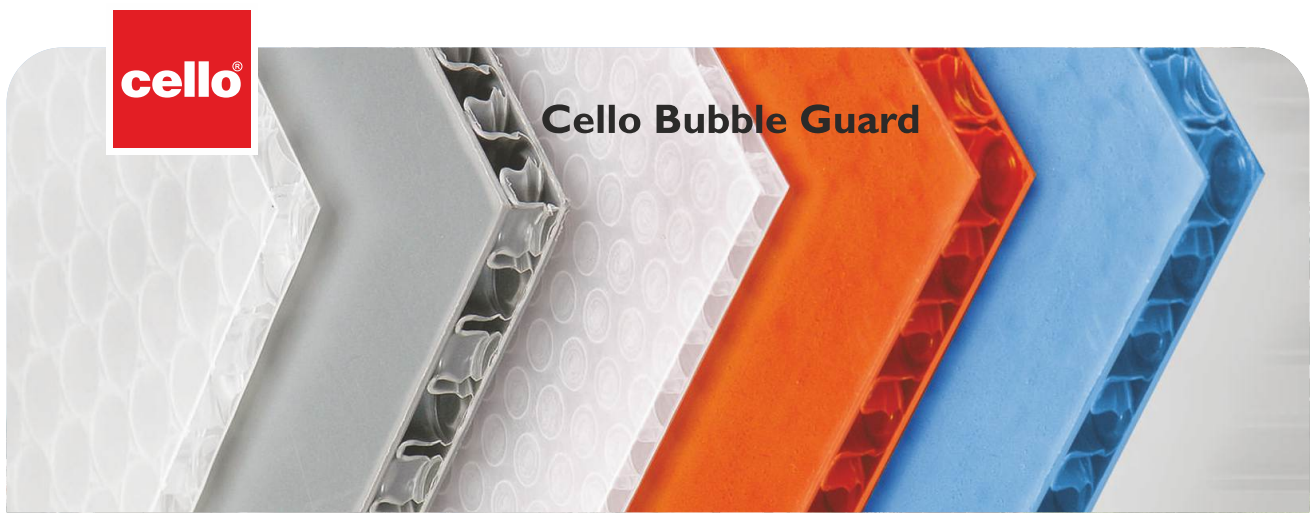
## Cello Bubble Guard



# EXCELLENCE !!

## Application / Sectors

- 1 **Wood Protector** : Save your expensive wooden Furniture from getting ruined by moisture with CelloWood Protector, It is easy to install and is crack and termite proof.
- 2 **Floor Protector** : Keep your shiny and expensive tiles safe with Cello Floor Guard. It is water proof, impact resistant, easy to install, reusable & most importantly no debris.



- 3 **False Ceiling** : Adorn your ceilings with unbreakable, elegant and pre finished Cello False Ceiling. They are waterproof, fire retardant, termite, insect and bacteria proof and the best alternative to expensive mineral fiber false ceilings.
- 4 **Wall Panel** : Make your walls more attractive with Cello Wall Panels. It is waterproof, termite proof, Heat & sound insulation value and easy to install.
- 5 **Wall Facing Board** : Cello bubble guard wall facing is most economical solution to expensive plywood & mica using as a wall facing board. Replace plywood from cupboards and showcases with beautiful, colorful and non-expensive Cello Wall Facing Boards. Forget the hassles of regular painting or polish.
- 6 **Door Panel / Partition** : A filler material of various door panel and partitions available in Cello Door Panel / Partition Sheet. Its light weight, cost effectiveness and easy installation makes it the first choice for all contractors and builders.

**Ideal for** Offices, Warehouses, Stores, Industrial Sheds, Textile Industries, Chemical Industries, Pharma Companies, Hospitals, Hotels, Docks, Ports & Commercial Complexes.





STRONG &  
DURABLE



MOISTURE  
RESISTANT

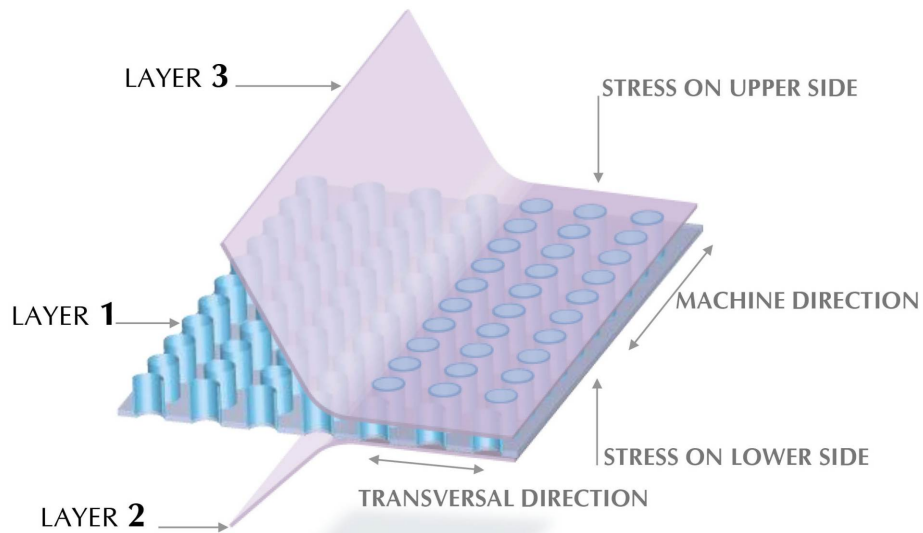


ATTRACTIVE  
COLOURS

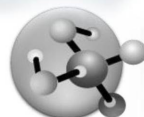


LIGHTWEIGHT

### The Unique Bubble Guard Structure



RECYCLABLE



STRONG &  
DURABLE



REUSABLE



TERMITE &  
INSECT - PROOF



ECO-FRIENDLY



**cello®**

## Cello Bubble Guard Wood Protector

**The Best protection for Expensive wooden furniture from water, bacteria and fungus.**

**Cello Bubble Guard Wood Protector –**  
The best protection for wooden furniture from water, bacteria and fungus. an inexpensive solution to protect your expensive wooden furniture and plywood from moisture and damage. The Cello Bubble Guard Wood Protector series is waterproof and shields your furniture from moisture, bacteria and fungus.

### Application areas:

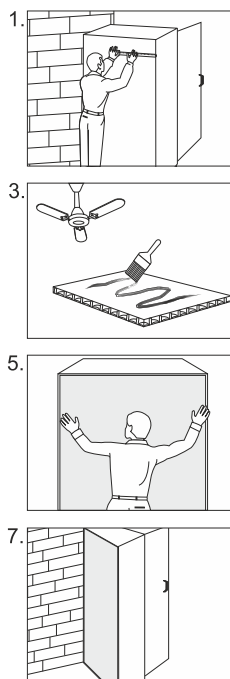
Back of your wardrobe, cabinets, mirrors and other furniture which are susceptible to moisture retention.

Ultimate Furniture Protector

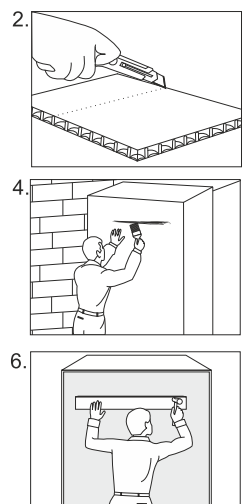
Variants Available

Thickness Available 1mm, 2 mm & 3 mm

### INSTALLATION GUIDE



1. Take the size of the plywood.
2. Cut the cello bubble guard sheet accordingly.
3. Apply special rubber base adhesive (SG 1000 of 3M / SP5 of Pidilite) on sheet as well as on the back side of the cupboard. Allow it to dry for 5-10 minutes.
4. Put the sheet on the back of the cupboard and apply pressure from one end to the other gradually, so that no air bubble remains inside.
5. Hammer the sheet by placing a plain wooden plank as shown in figure for fixing.  
And the Water Proof & Termite Proof Wood Protector is ready to protect your expensive wardrobe from the moisture of the wall.







# Cello Bubble Guard Floor Protector

## Assures Quality Not Complaints

- Fully Reusable
- Waterproof
- Impact Resistant
- 100% Recyclable
- Easy to cut & Shape

In the under construction sites, the floor tiles are laid prior to the finishing of the buildings. All the electrical & other fittings are done after the flooring is completed. Portable scaffolding, tools & other equipment also move on the floor.

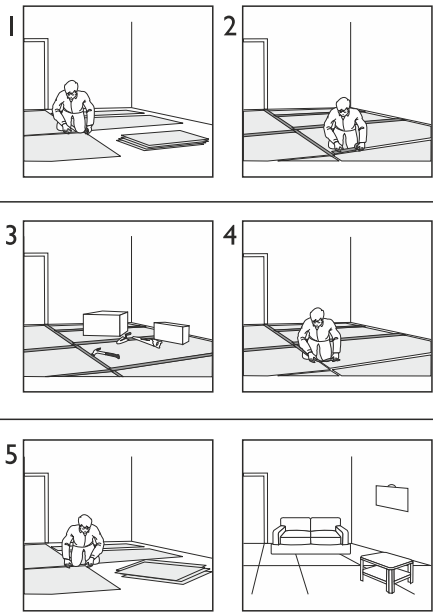
To avoid the damage to the floor; plaster of Paris (POP) is laid on the flooring & removed after the completion of the job. POP has many disadvantages as it is cumbersome to lay & remove, skilled labour is required, Time consuming, Disposition of debris after completion is the major problem, while removing / scrapping operation chances of getting scratches to the tiles. Construction sites become shabby, uncomfortable, dusty and unhygienic.

The sheets offer high tensile strength, resists stress cracking, retains stiffness & flex, non-staining & easily fabricated.

**Thickness : 2 mm, 2.5 mm, 3 mm, 4.5 mm  
(125 gsm, 200gsm, 250 gsm....500 gsm)**

**Standard sizes are :  
6.5 ft x 4 ft, 8 ft x 6.5 ft, 100 ft x 6.5 ft**

### INSTALLATION GUIDE



1. Depending on the area of the floor to be covered, take the bubble guard sheets accordingly.
2. Place the sheets one by one and cover the floor.
- 3 Put the tape on the joints of the sheets so that they Tile Protector is ready to prevent your expensive flooring from the damages during construction.
- 4 After the work is done remove the tapes.
- 5 Remove the sheets & store them as they are reusable.





## COMPARISON OF BUBBLE GUARD AND POP AS A FLOOR PROTECTOR

| DESCRIPTION                            | BUBBLE GUARD                              | POP  |
|--|---|--|
| Cost                                   | Economical                                | Costly   |
| Structure                              | Sheet Form                                | Powder Form  |
| Application Time                       | Fast                                      | Lengthy  |
| Application Method                     | Dry & Clean                               | Wet & Dirty  |
| Readiness of surface after application | Immediate & ready to use                  | Minimum 5 hours  |
| Protection after application           | Complete floor protection                 | Limited floor protection                                 |
| Durability                             | Long                                      | Short, One time application                              |
| Extra Protection                       | Nothing required                          | Plastic / Newspaper required                             |
| Skill                                  | Do application yourself                   | Only POP worker can do application                       |
| Joints                                 | Tape on joints is required                | Require nothing  |
| Maintenance                            | One time application for floor protection | Repeated application required for full coverage of floor |
| Atmosphere                             | Clean working atmosphere                  | Always gives dusty atmosphere                            |
| Usages                                 | Multiple time use                         | One time use   |
| Removal                                | Do it yourself                            | Water & Labour required for removal                      |
| Salvage Value                          | Return value after multiple use           | Nil, plus expense for removal                            |
| Debris                                 | No debris                                 | Extra cost for removal of debris                         |
| Water Resistance                       | Water proof                               | No   |
| Handling                               | Easy to carry / remove                    | Labour required  |
| Identity                               | Printing of logo possible                 | Nil  |

## Cello cost effective solution for Floor Protection to the building industry

Cello Bubble Guard is an extruded Polypropylene Sheet used as protection board that replaces traditional floor protector materials like plywood & gypsum board.

### POP



### BUBBLE GUARD



### INSTALLATION GUIDE

#### Assembly

Gives easy and uniform coverage compared with POP, which takes 5 long hours to make the floor ready. Any unskilled labour can use it.

#### Advantage

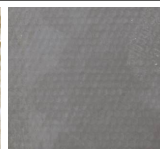
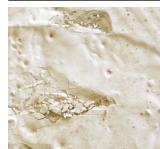
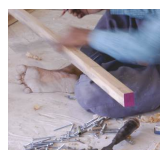
No on-site equipment is required for the assemblage, thus giving a clean working environments that boosts performance.

#### Value

A big time saver for assembly and dismantling processes. Recyclability, gives the value for money, against the one time use of POP, which that also attracts debris removal costs with zero salvage value.

#### Performance

Expensive surface materials like flooring, wall cladding etc. are well \* guarded against damages. It allows portable scaffolding, so that tools and equipments can be freely moved around.







## Cello Bubble Guard False Ceiling Panels

### Stronger and Lifelong Revolutionary

#### APPLICATIONS

Ceilings are mostly used in Banks, Software Offices, IT Parks, Educational Institutions, Shopping Malls, Health care facilities, Industries & Typical acoustic applications in Multiplex Complex, Theatres, Auditorium etc.

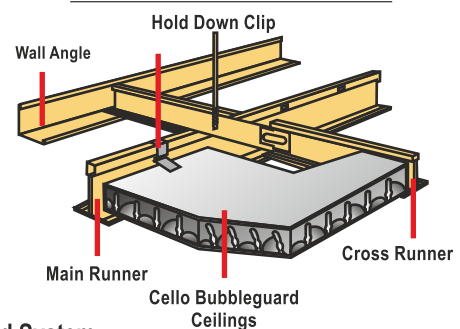
- Suspected below existing ceiling in a grid.
- 2' x 2' and 2' x 4' panel sizes
- Typically requires a drop of at least 6" from current ceilings
- Ideal way to lower or level an existing ceiling
- Easy access to fixtures above the ceiling
- Easy to replace
- A good choice for recessed lighting can be installed with existing available unskilled labour

#### STANDARD SIZES:

2' X 2' ft / 2' X 4' ft

Thickness : 7 mm & 4 mm

#### INSTALLATION GUIDE



#### Punch Grid System



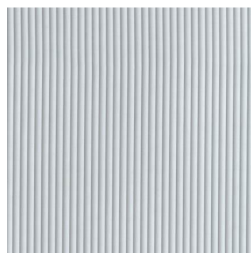
**cello®**

**Typical Properties of polypropylene are given below :**

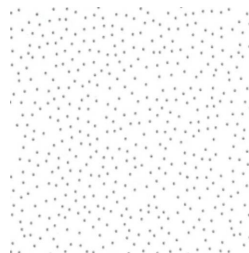
| Particulars                              | Typical values            | Test Standard               |
|--|---------------------------|-----------------------------|
| Specific Gravity                         | 0.9 to 9.1                |                             |
| Tensile Strength (ib/inch <sup>2</sup> ) | 4000 to 5200              | BS2782                      |
| Elongation at break (%)                  | 400 to 900                | BS2782                      |
| Notch Izod Impact Strength (ft.lb/inch)  | 2.5 to 4.0                | BS2782                      |
| Shore Hardness D                         | 71 to 75                  | ASTM.D.148-57               |
| Vicat Softening point (°C)               | 150                       | BS2782                      |
| Dielectric Constant (106 c/s)            | 2.0 to 2.15               | ASTM.D.150-54               |
| Water absorption, 24 hrs, 1/8" thick (%) | 0.01-0.03                 | D570                        |
| Hardness, Rockwell R                     | 80-110                    | D785                        |
| Thermal conductivity                     | 2.8                       | C177                        |
| <b>Sr. No</b>                            | <b>Property</b>           | <b>Value</b>                |
| 1.                                       | Humidity Resistance       | 99%RH                       |
| 2.                                       | Material Fire Performance | V2 (also perform V0) rating |
| 3.                                       | Light Reflectance         | 80%                         |
| 4.                                       | Material                  | Virgin Polypropylene        |



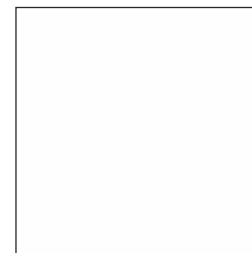
**BPF01**



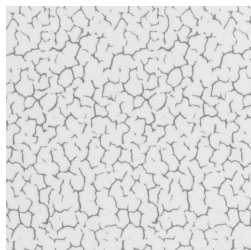
**BPF02**



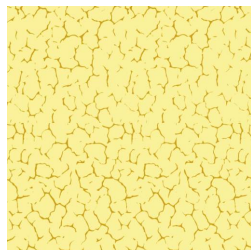
**BPF03**



**PLW01**



**CRACK-SILVER TRANSPARENT**



**CRACK-GOLDEN BEIGE**



**NWB01**



**NWO01**







## Cello Bubble Guard Wall Coverings

**Attractive & low maintenance wall coverings**

**Ideal for :** Hotels, Offices, Homes, Clubs & Commercial Complexes with contemporary designs and textures.

**Standard available size is 8ft x 4ft,**

**8ft x 3ft : Wenge, Wenge Green, Green Beach, Steam Beach,**

**Thickness : 3 mm**

### Wall Paneling Facts:

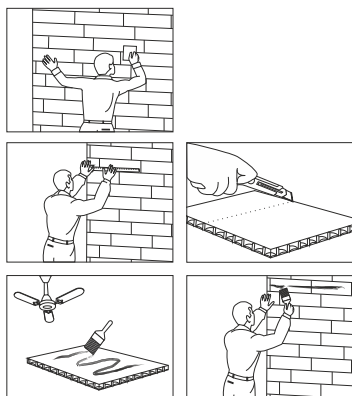
- | 100% Waterproof
- | Extremely easy to install (no mudding, sanding or painting required)
- | Can be applied directly over existing wall.
- | Termite Proof, corrosive-resistant, aging resistant, High intensity & Impact-resistant, non-staining
- | Easy to clean, Hygienic
- | Class V2 fire rating
- | Acid and Alkali Proof
- | Heat & Sound Insulation Value
- | No need of paint, Epoxy Coating





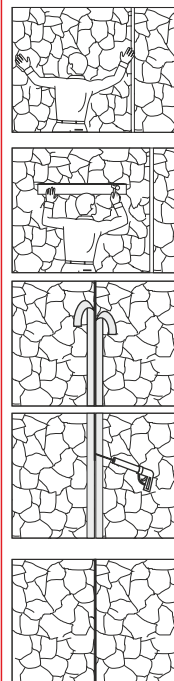


**Cello Bubble guard Propylene Wall Panel** has various advantages over other materials namely **Waterproof, Termite Proof, Fire Retardant, Economical, Maintenance free & available in various designs & no hassles of Paint & Polish.** The panels offers high tensile strength, resists stress cracking, retains stiffness & flex. **Cello Bubble Guard decorative paneling** designed to provide flexibility, durability & beauty.



### INSTALLATION INSTRUCTIONS

- Walls should be smooth, Clean & Free from any structural defects as it will effect proper bonding.
- When applying cello wall Panels onto uneven substrate or Brick walls make sure walls are plastered wall to ensure perfect bonding.
- **Preparation of wall surface :**  
Before applying cello wall panel, scrape the wall.  
Take the exact measurement of the wall & cut the sheet accordingly.
- **Application of Adhesive :**  
Apply Special rubber base adhesive (SG 1000 of 3M / SP5 of Pidilite) on sheets as well as wall. Ensure adhesive is applied thoroughly for full surface bonding. Allow it to dry for 5-10 minutes.



### Mounting cello wall Panel

- Put the Sheet on wall & apply pressure from one end to the other gradually, so that no air bubble remains insides.

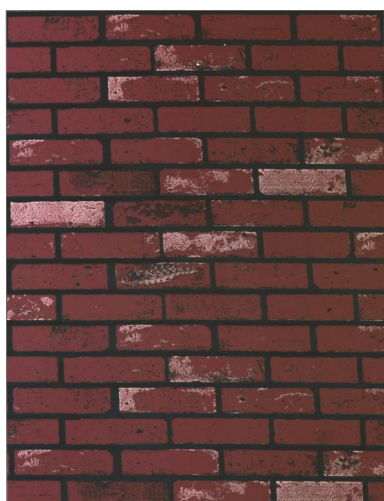
- For mounting 2 sheets side by side, maintain a gap of 3-4 mm for sealant to be filled in or else two sheets can be flushed.

### Application of pressures

- Hammer the sheet by placing a plain wooden plank as shown in figure for fixing.
- If gap is maintained between two sheets, put white tape on all borders of the sheets, & the wall where silicon is to be filled in between the portion of the tapes. This is used as sealant which serves as a frame of the sheet on the wall.
- Than remove the tape simultaneously, as you fill silicon in the gape of the tape.
- Fire proof, termite proof, long lasting wall of your favourite design is ready in a few hours.







New Brick



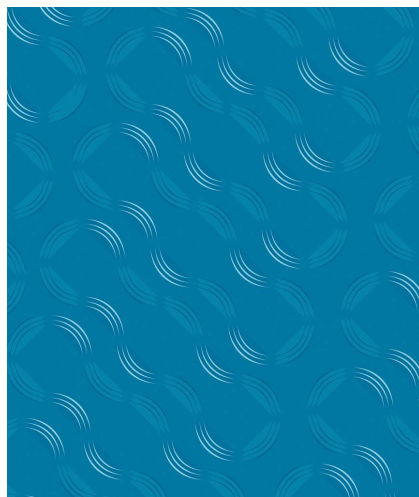
Stone old







Curvy Red



Curvy Blue





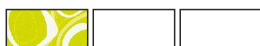
Wood Block







Circle - White / Green







Zebrano



Wim Teak

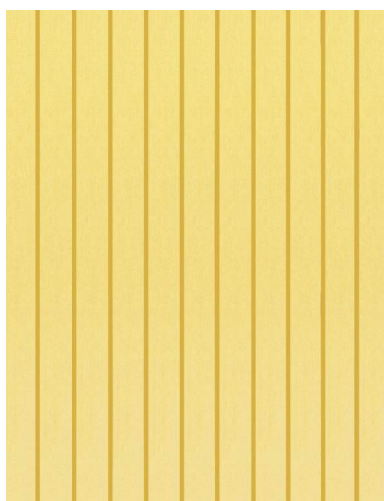






Home steader Brown





Strip-Golden



Strip-Silver / Brwn



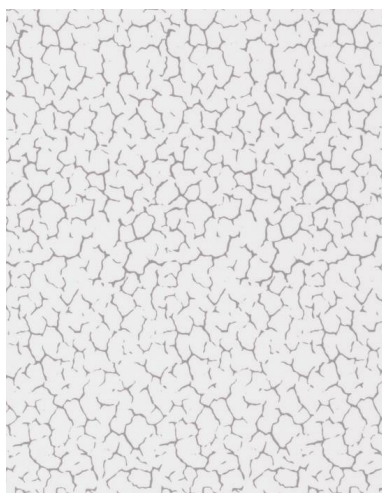


Flw-Golden / Yellow

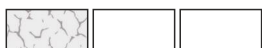


Flw-Golden / Red





Crack-Silver/Transparent







## Cello Bubble Guard Wall Facing Board

A Replacement for a **Plywood** In lower price

Cello Bubble Guard Wall Facing Board is used as a replacement for the Plyboard and Mica which are used in the back inside of Cupboard. It is directly fixed at the back of the cupboard, showcases, dressing tables, Tv trolley etc by nailing it. Cello Bubble Guard Wall facing Board will save your time & money.

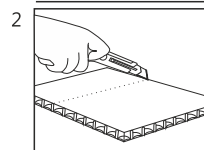
**Standard available sizes are 8ft x 4ft.**

**Standard available thickness is 5, 6 mm & 8 mm.**

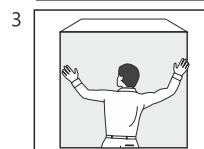
**Colour Available, White, Gray, Ivory**

### INSTALLATION GUIDE

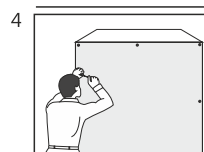
Take the size of the back of the cupboard.



Cut the cello bubble guard sheet accordingly.



Put the sheet on the back of the cupboard



Do the nailing using washer to fix the sheet. And the Water Proof & Termite Proof wall facing board is ready to protect your expensive furnitures from the moisture of the wall as well to give it a new look.







## Cello Bubble Guard Door Panel / Partition

**Designed to meet your specific requirements**

Cello Bubble Guard Door Panels are used as Filler of alumini, PVC, Wood & other frame, Versatile to use, available in different thickness with various attractive designs which don't need paint or polish.

The panels are light weight, water proof, termite proof & non-toxic. The panels offer high tensile strength, resists stress cracking, retains stiffness & flex. They are non-staining. The panels are insured of better durability, longer functional life & also effective cost.

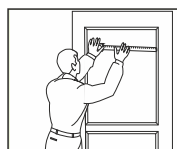
**Standard available thickness is 6 mm, 9 mm.**

**Colour Available :** Strip Silver Brown, Rose Wood, Strip Golden, Wenge, Zebrano, Wim Teak

**Standard available sizes are**  
**6ft x 2.5 ft, 6ft x 3 ft, 6ft x 4 ft & 8ft x 4ft**

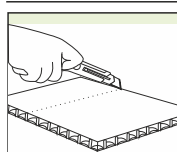
### INSTALLATION GUIDE

1



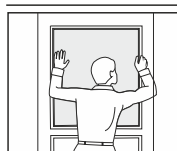
Take the size of the door frame.

2



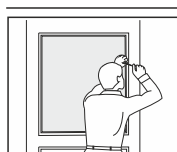
Cut the bubble guard sheet accordingly in the right angle.

3



Put the sheet at the right position using gaskets to fix it properly.

4



Using the screw driver & nails fix the door frame.





**cello** Wim Plast Ltd.

Admin Office : Cello House, Corporate Avenue, 'B' wing, 1st Floor, Sonawala Road, Goregaon (E), Mumbai : 400 063. India.  
Ph: +91-22-2686 3426/27, 2686 4630 | F : +91-22 2686 3681 | E: [wimplast@cellobworld.com](mailto:wimplast@cellobworld.com), [www.cellobubbleguard.com](http://www.cellobubbleguard.com)

